

Discover

Schoolcraft County

discoverschoolcraft.com

[#discoverschoolcraft](https://twitter.com/discoverschoolcraft)

Discover Your Next Adventure in Schoolcraft County

Natural Passion

Surrounded by water, forest, and sky—this is where a love for the outdoors runs deep. Passion thrives in every season and every breathtaking view.

Human Connection

No noise. No rush. Just the rhythm of trees, water and time well spent. Here, connections grow naturally—between people, place and moment.

Creative Possibility

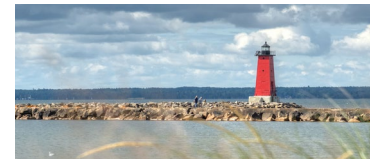
From sandy paths to forest trails, every journey sparks inspiration. Schoolcraft County is where your next idea can take root and grow.



Scan the QR Code or visit discoverschoolcraft.com to discover more of Schoolcraft County.

Supported by Schoolcraft Tourism & Commerce and funded by the USDA Rural Business Development Grant.

Table of Contents



4-5

Discover Manistique



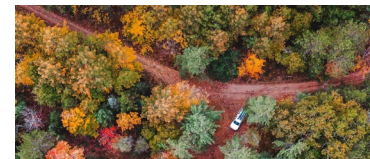
6-7

Rooted in Community & the Sault Tribe



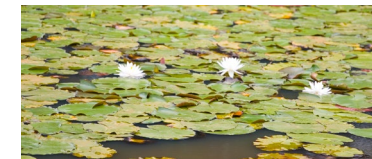
8-9

Kitch-iti-kipi



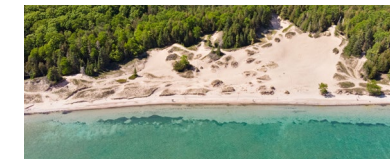
10-13

Travel Bucket List



14-15

Endless Great Trails in Schoolcraft County



16-17

Lake Life



18-19

A Storied Past & Historic Landmarks



20-21

The Creative Coastline, Arts & Culture



22-23

The Matriarchs of Downtown Manistique



Discover Manistique

From its scenic shores to its vibrant arts and friendly neighborhoods, Manistique inspires adventure, imagination, and connection.

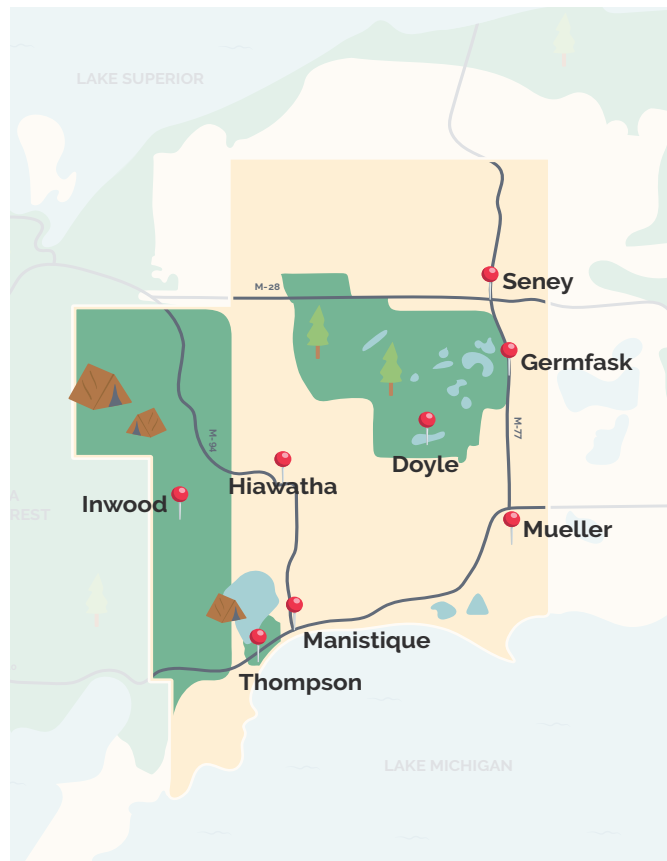
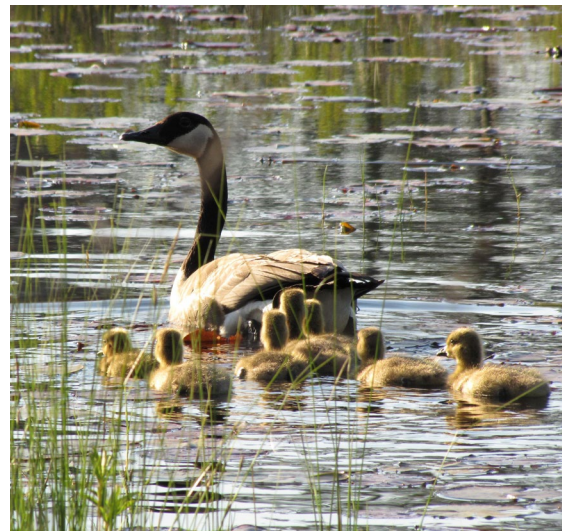
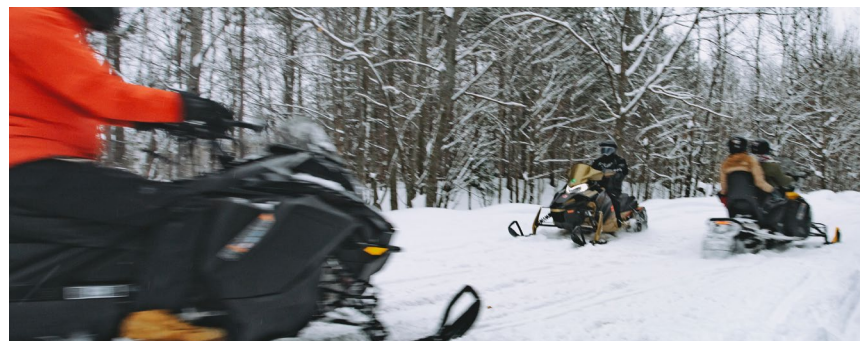
Manistique burst onto the scene as a lumber town in the late 1800s, as its location—nestled between Lake Michigan and the Manistique River and in the midst of lush forests—offered a convenient location to float newly-cut logs down the river and out to sea. Today, the sense of adventure and possibility that defined Manistique's boom-town origins lives on via the city's bustling local economy, strong sense of community, and creative core.

As the seat of Schoolcraft County, Manistique is a hub of government and commerce that draws the entire county.

Unique shops and restaurants invite guests and locals alike to browse, bite, and discover one-of-a-kind gems, while nature-lovers flock to the area's multiple beaches, forested trails and the nearby Big Spring.

With friendly faces, peaceful views, an artistic spirit and a pace that invites you to slow down and take it all in, Manistique is a true Upper Peninsula treasure. Whether you're coming for the scenery, the shopping, or the serenity, this lakeside gem will leave a lasting impression.

Rooted in Community



At the heart of the Upper Peninsula, neighboring townships come together, each contributing to what makes Schoolcraft County whole.



Past, Present, Future: The Legacy of the Sault Tribe

The Heritage:

Deeply rooted in Manistique, the Sault Tribe honors centuries of Anishinaabe history.

The Experience:

Today, the Sault Tribe invites visitors to experience Anishinaabe culture through vibrant powwows, community events, and traditions that have thrived for centuries.

The Anishinaabe, or "original people", have lived in Michigan's Upper Peninsula for over a thousand years, their history rooted in the forests and waters that define the region. Today, the presence of the Sault Ste. Marie Tribe of Chippewa Indians—known locally as the Sault Tribe—continues to shape the area through both cultural traditions and modern enterprises that welcome visitors year-round, bringing both a deep sense of cultural heritage and a lively calendar of community events to Schoolcraft County. Each June, the annual Sault Tribe powwow offers not only a culturally and historically significant event for the tribe but also a public gathering that welcomes newcomers and visitors. Held at the Manistique Tribal Community Center, east of downtown on US-2 and just steps from the casino grounds, this gathering of tribal members and the public alike honors Anishinaabe heritage with traditional drumming, dancing, and brilliantly adorned regalia.

Beyond cultural celebrations, the Sault Tribe also provides important community-focused services and amenities. The Manistique Fitness Center is a state-of-the-art facility open to the public through membership opportunities, supporting wellness for both residents and visitors. Additionally, the Manistique Tribal Health Center

offers medical and support services to Tribal members, reinforcing the Tribe's commitment to health, wellness, and community care.

The Sault Tribe also owns and operates the Kewadin Casino Manistique, which engages with the community and visiting guests in a variety of innovative ways. Visitors who stay at one of the Kewadin Casino's partner hotels or at Lakeshore Campground in Manistique receive \$10 in casino play for each night of their stay, and the casino also has a presence at community celebrations like Folk Fest, Flannel Fest and the Manistique Car Show, where marketing representative Abigail Galen hands out prizes and free play vouchers to attendees. "Our promotions are open to the public—for example, we have a promotion where anyone can come into the casino and enter our drawings, even if they don't have a Player's Club card," says Galen. Seasonal happenings inside Kewadin, like karaoke nights, themed events, and even a Halloween karaoke battle, offer a lively way for travelers to connect with the local scene.

From the energy of Kewadin's events to the enduring traditions of the Sault Tribe, visitors to Manistique find modern entertainment rooted in a story centuries in the making.

Kitch- iti-kipi

Kitch-IT-tee-kip-ee

Michigan's largest spring is clearer—
and cooler—than you think.

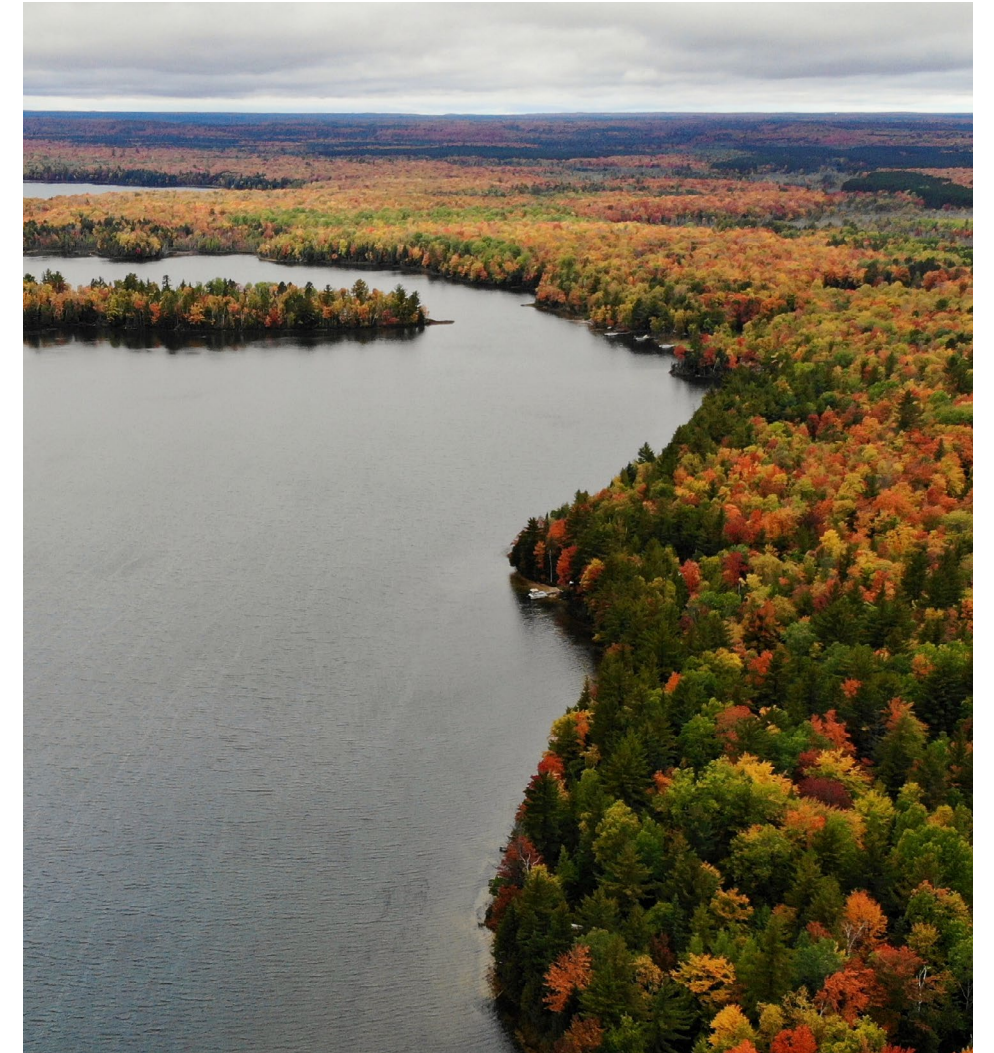


"Have you seen the Big Spring yet?" Spend any time in Schoolcraft County, and chances are a local will ask you that question. This massive freshwater spring (the largest in Michigan) is more than just a natural wonder; it holds a mystical appeal in its jewel-toned waters. In addition to being the inspiration of multiple Native American legends, the Big Spring—also known as Kitch-iti-Kipi, and more officially as Palms Book State Park, holds an otherworldly beauty.

A short but rewarding stroll down a boardwalk path offers glimpses of the spring through the pines. Once at the dock, cranking a wheel on the manually-propelled platform—accessible year-round; the Big Spring never freezes—propels a large wooden raft to the middle of the spring where visitors can peer some 40 feet down into the emerald depths, watching schools of massive trout weave through the crystal-clear waters while 10,000 gallons per minute of water pushes through cracks in the spring's floor creating eddies of swirling sand.

Look up and out, and the view is just as captivating: flanked on all sides by trees and a captivating bend in the river, the view is classic Upper Peninsula and especially magical in winter when surrounded by snow-covered boughs.





Your Schoolcraft County

All-Season “Bucket List”



Stroll, Paddle, and Soak Up the Scenery

Stretch your legs on the 1.5-mile Manistique Boardwalk, leading to the East Breakwater Lighthouse, one of the county's most photogenic spots. On summer days, dip into the clear waters of Lake Michigan or paddle the Manistique River. When the snow falls, swap swimsuits for skis or snowshoes in the Hiawatha National Forest, or rev up the sled for miles of snowmobile trails that crisscross the county.



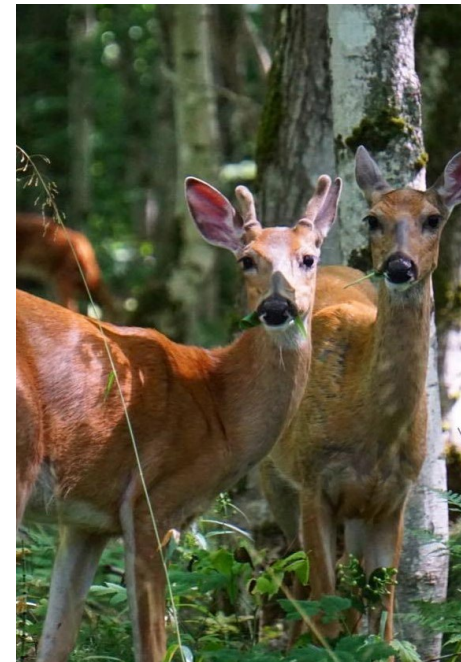
Experience the Magic of the Big Spring

No trip to Schoolcraft County is complete without visiting Kitch-iti-kipi, Michigan's largest freshwater spring. At Palms Book State Park, peer into its emerald depths from a self-propelled raft and watch trout glide through crystal-clear, bubbling waters. The spring stays 45 degrees year-round, making it just as enchanting when framed by winter snow as it is in summer sunlight.



Dive into History and Local Flavor

Step back in time at Seul Choix Point Lighthouse, one of Lake Michigan's most iconic beacons, or travel west to Fayette Historic State Park to wander a preserved 19th-century smelting town. Pair history with hometown hospitality: grab a hearty breakfast at a local diner, explore shops filled with antiques and artisan goods in Blaney Park, and cap the day at Trader's Point in Manistique, where coffee, cocktails, and community events keep the energy flowing in every season.



Hunt, Fish, and Embrace the Wild

If hunting or fishing is your sport, you'll feel right at home here. Miles of public land, peaceful forests, and countless inland lakes and rivers offer endless opportunity. Hunters pursue deer, bear, grouse, and waterfowl, while anglers target walleye, perch, whitefish, trout, and salmon. Enjoy fly fishing, boating, and our July Salmon Derby with a major cash prize. From beginners to seasoned pros, outdoor adventure awaits in beautiful Schoolcraft County.

Schoolcraft County brings new ways to explore, recharge, and connect with nature in every season. Whether you're chasing summer sun or winter snow, these highlights capture the spirit of the county.



Adventure Awaits, Summer or Winter

From birdwatching at Seney National Wildlife Refuge to fishing on Indian Lake, Schoolcraft County offers four-season adventure. Hike or bike through wooded trails in summer; return in winter for cross-country skiing, ice fishing, or the surreal beauty of a frozen Lake Michigan shoreline. Whether you prefer a quiet afternoon on the water or a high-energy ride through the forest, the county's wild spaces are your playground.



End on a Sweet Note

Every perfect day here deserves a perfect ending. In the summer, that might mean gathering at a local ice cream stand after a day of hiking or kayaking. In winter, it's a steaming mug of cocoa by the fire after snowshoeing through the woods.

And no matter the season, downtown Manistique is the place to linger a little longer with all-season treats, cozy coffee shops and specialty drinks. This simple pleasure, wrapped in small-town charm, is a perfectly sweet cap to any adventure.



Find all our trails in one place by scanning the QR Code below.



discoverschoolcraft.com/trails

Promoted more by word of mouth and the lifelong-won experiences of locals than maps and directories, ruggedly beautiful Schoolcraft County trails are everywhere—including some places you may not think to look.

The thrill of the discovery is all part of the fun, so use this guide as a jumping-off point, not a prescription.

Endless Great Trails in Schoolcraft County

The Opportunity:

With outdoor adventure hardwired into U.P. culture, trails are absolutely everywhere.

The Challenge:

Sometimes? They're a little hard to find.

Whether you prefer to speed along on a snowmobile or ATV, glide on cross-country skis, pedal your bike or move at the speed of your own two feet, there's a trail for you just around the corner.

Seney National Wildlife Refuge **Manistique River Trail**

Established in 1935, this refuge encompasses a vast 95,000 acres and is home to diverse ecosystems including wetlands, forests, and prairies. Start your adventure at the Visitor Center north of Germfask, where you'll encounter multiple hikes weaving through lush forests, open meadows, and along wetlands teeming with wildlife including heron, otter, and beaver. In the winter, Seney is a great spot to snowshoe and cross-country ski. Observation towers offer impressive photo ops from a bird's-eye view, so be sure to bring your binoculars.

Haywire Grade Trail

Stretching 32 miles north-south from Manistique to Shingleton, the multi-use Haywire Grade Trail offers trailheads at Intake Park Road in Manistique, Jack Pine Lodge on M-94, and on the east side of M-94 just south of Shingleton (park at Tanglewood Restaurant on M-28.) The Haywire was Michigan's first rail trail, and today the hike through second-growth forest (look out for wild blueberries in mid-to-late summer) serves as a reminder of the logging camps that once dotted its length. Interpretive kiosks and mile markers guide the way along this historic trail. With its mix of sand, gravel, and coarse limestone, The Haywire is suitable for snowmobiles, ATVs, and fat-tire bikes.

The Manistique Boardwalk

Stretching nearly two miles along the Lake Michigan shoreline heading east from downtown Manistique, this well-maintained boardwalk provides a smooth and easy path for walking and wheelchair access. Interpretive signs along the way educate visitors about the local ecosystem, and you'll enjoy unobstructed views of Lake Michigan and Manistique's famous red lighthouse while passing by dunes, wetlands and diverse wildlife.

This newly-created quarter-mile trail is located just outside of Manistique's downtown business and dining district, making it super-accessible for a quick stroll after your shopping trip or before dinner. As the path winds through forests and wetlands, you'll be treated to glimpses of the Manistique River and rapids, with industrial views adding unexpected contrast to the bald eagles and osprey that frequent the area. Enter at the parking lot on the East side of the Siphon bridge, across the bridge from the water tower and Historical Society headquarters.

Indian Lake Pathway and State Park

Located in the Lake Superior State Forest, the Indian Lake Pathway system includes three separate loops of 1, 3, and 4.5 miles, which can be combined for a total of 8.5 miles of hiking, passing through a variety of woodlands and wetlands over both flat and rolling terrain. Look for the trailhead between Palms Book State Park and County Road 442 off of M-149. An additional two miles of trails, including the Dufour Creek Loop, are located inside of Indian Lake State Park, and include a quarter-mile paved, accessible trail with lake overlooks in the day use area.

Wherever you are.

In the Upper Peninsula, trails often look less like a clearly-marked destination... and more like a mystery to be discovered. And nowhere is this more true than in Schoolcraft County, where tucked-away trails await around every turn. From birdwatching on a leisurely stroll in Blaney Park, to peaceful hikes along the limestone cliffs overlooking Fayette Historic State Park, to duneside scrambles along Highway 2, you're sure to find a trail to hike, bike, snowshoe, ski, or ride—no matter your starting point. Keep your water bottle full and your eyes open—and, when in doubt, talk up a friendly local.

Lake Life

From Lake Michigan's sweeping views to the quiet charm of inland lakes, no matter where you are in Schoolcraft County, you aren't far from a place to dip your toes, launch your boat, or just sit and listen to the waves.

1 Indian Lake State Park

Soft sand and warm water plus picnic areas and restrooms offer the perfect inland lake beach experience.

2 Carl D. Bradley Lakeview Memorial Park

Downtown park with playground, restrooms, a stretch of shoreline, and easy access to the boardwalk, pier and lighthouse.

3 Manistique Township Park

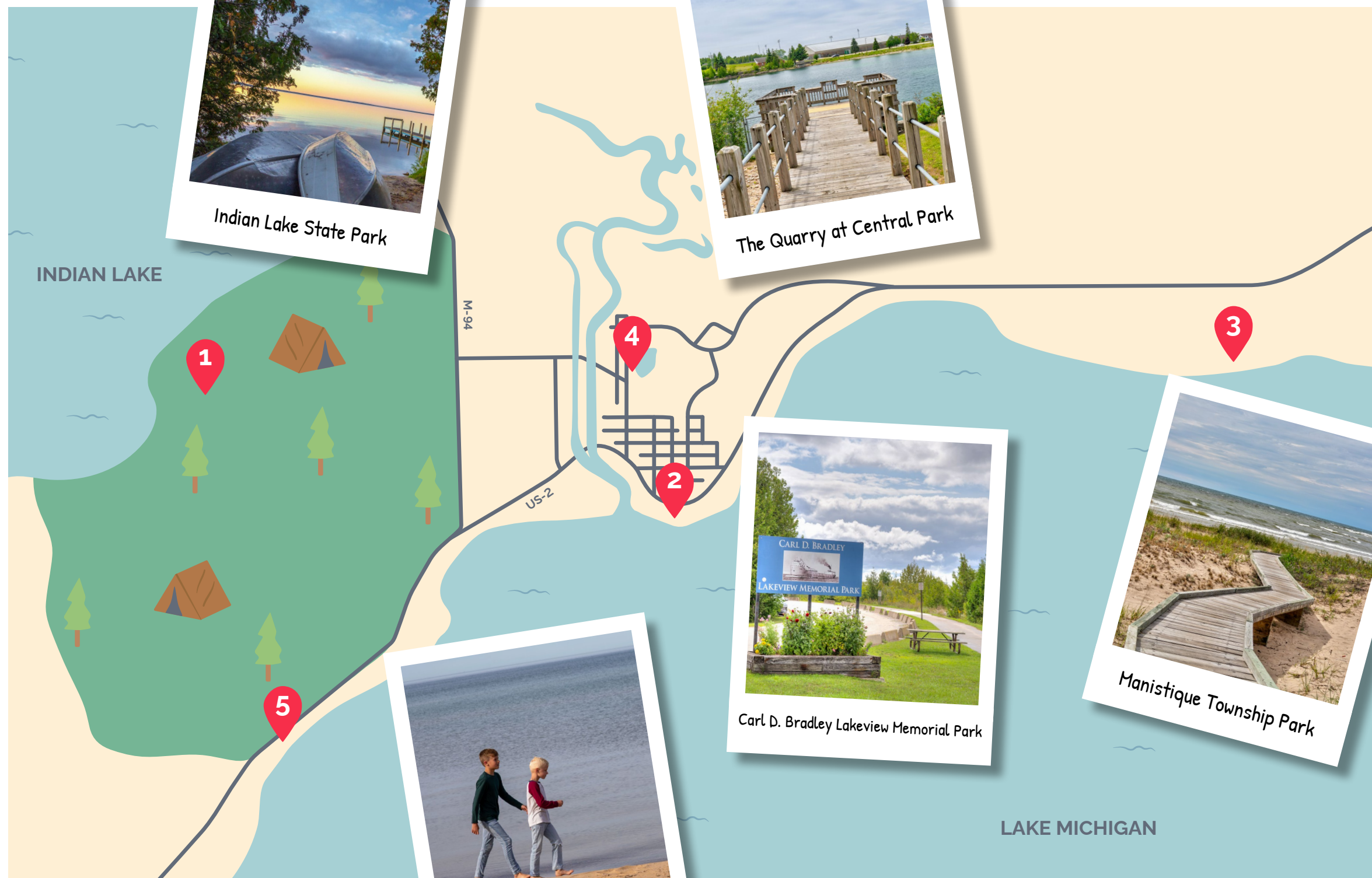
A quiet, family-friendly beach with playgrounds and picnic tables, tucked away in a quiet neighborhood four miles east of Manistique.

4 The Quarry at Central Park

A repurposed limestone quarry has found new life as a spring-fed downtown swimming hole, complete with nearby trails and picnic spots.

5 Rogers Park

A classic Upper Peninsula roadside park just west of Manistique along US-2.



Indian Lake State Park



The Quarry at Central Park



Carl D. Bradley Lakeview Memorial Park



Manistique Township Park



Rogers Park



Pioneer Park
Manistique, MI

A Storied Past

Established in 1860, Schoolcraft County boasts a long and layered history rooted in Michigan's lumbering past and shaped by its pioneering spirit. Today, thanks to the efforts of the Schoolcraft County Historical Society, that rich past is being preserved, explored, and shared with locals and visitors alike.

“Our mission is to educate and share the history of the county,” explains Jane Kopecky, the curator for the Schoolcraft County Historical Society. “We’ve been in existence since 1950, so we have a long history ourselves.”

At the heart of the Society's work is Pioneer Park. Nestled between Manistique's downtown and West Side business districts, the park's five structures serve as both a museum campus and a gateway to the past. Located just steps from the Siphon Bridge and the new Manistique Riverwalk, Pioneer Park features several restored historic structures, including a water tower, log cabin, and the “post house” from the early 1920s.

The Society is also helping bring new life to historic areas, such as the Riverwalk, where foundations from early 20th-century industrial buildings still peek through the woods. “We’re working to identify those sites using old Sanborn fire maps and add interpretive signs,” she adds.

The Riverwalk and Pioneer Park are just two parts of a broader historical experience that includes nearby sites

like the Siphon Bridge, an engineering marvel that once defied logic by allowing river water to flow over the bridge deck (and was featured in Ripley's Believe It Or Not.) The Christmas Tree Ship site, just a short drive from downtown Manistique in Thompson Township, is the original port where the ill-fated schooner Rouse Simmons set sail with a load of evergreens. Interpretive signage tells the ship's haunting story (which is also the subject of a musical, *The Christmas Schooner*). And the Elks Temple, now celebrating its 125th anniversary, is believed to be the oldest in the country.

The Historical Society is open seasonally: typically May through October, Tuesday through Saturday from 11 to 3. Year-round, research appointments can be made by contacting the team via their website or Facebook page.

“People have long-standing connections to this place,” Busch reflects. “They come back every year, and we love to help and love to share.”

Historic Landmarks in Schoolcraft County

Whether you're a history buff or just want to add another enviable photo to your Upper Peninsula photo album, make sure you add seeing these three sites—all listed on the National Register of Historic Places—to your itinerary.



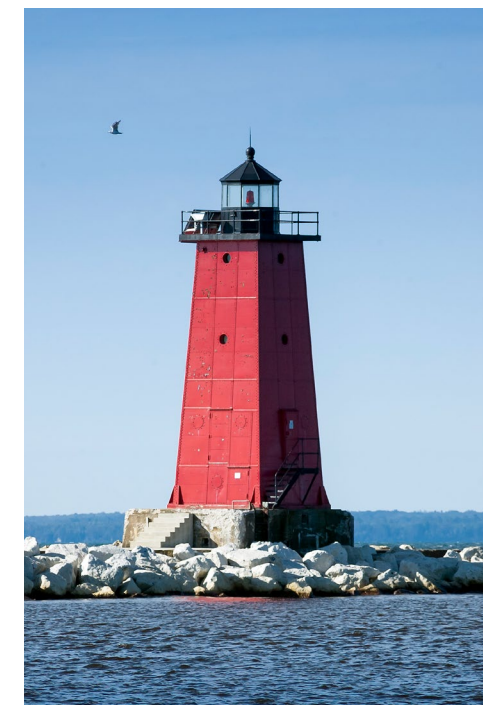
Manistique Pumping Station

Located in Pioneer Park, this structure was built in 1921–22 and used until 1954. With its octagonal exterior made from red brick and limestone and domed copper roof, the building is a beautiful example of early 20th century industrial design. Painstakingly restored and preserved in the early 2000s, the pumping station, also referred to as the water tower, is the site of the Schoolcraft County Museum.



Seul Choix Pointe Light Station

Dubbed the “only harbor of refuge” along a dangerous 100-mile stretch of Lake Michigan's shoreline, the Seul Choix Pointe Light has guided mariners since 1895. Designed by the famed lighthouse architect Orlando M. Poe, it's one of the region's most iconic historic sites (and it's also rumored to be haunted, adding a touch of mystery to its storied past).



Manistique East Breakwater Lighthouse

Standing at the offshore end of the east breakwater, Manistique's famously picturesque lighthouse was first illuminated in 1916 to guide vessels safely into the busy harbor. Though the port's commercial role has faded over time, the light continues on as a reminder of Manistique's maritime history—as well as a can't-miss spot for romantic sunset walks and Instagram brags.

The Creative Coastline

Arts and Culture in Schoolcraft County

Just north of Hwy 2 on Manistique's Cedar Street, a mural, stretching across two buildings on either side of Oak Street, offers a colorful welcome to Manistique's downtown business district. Designed by artist Mia Tavonatti as part of the Power of Words project and created by Mia's team and local artists with input from the community, the mural is a fitting greeting from a county that enthusiastically celebrates creativity and an artistic spirit. Whether you're just passing through or planning to stay a while (or a lifetime!), you'll want to check out the artistic events, organizations, and destinations.

Downtown Manistique, MI



Lake Effect Community Arts Center

The beginning was humble for the Lake Effect Community Arts Center, which opened in 2011 as a small gallery space. It spent its first eight years operating from a variety of rented spaces. In 2019 Lake Effect achieved its goal of having its own space when mBank made the organization a generous gift of the old Ford dealership. In this prime downtown location on the corner of Cedar and Oak Streets, the organization's impact has continued to grow.

Guests can browse the seasonal gallery shop from Memorial Day through late October. Monthly Maker's Markets, May through August, feature the work of local artists and crafters. On the first and third Thursdays of each month, April through December, the Center hosts free community jam sessions in the evening. Lake Effect continues to expand its year-round offerings, which now include community classes, and drop-in events like preschool art playtimes.

Music in Manistique

Presented by the Lake Effect Community Arts Center in partnership with the City of Manistique, this free weekly series features weekly concerts including a mix of local and touring musicians performing a mix of genres from jazz and blues to classic rock, folk, and country, on Thursday evenings at 7 PM from mid-June through mid-August at the Central Park Bandshell in Manistique. Check online to verify event times.



Check our calendar for the latest events!

Scan the QR Code or visit: discoverschoolcraft.com/event-calendar

Flannel Fest

Every fall, locals and tourists look forward to the Westside Flannel Festival, a one-day event featuring arts and craft vendors, live music, food, and more in Manistique's west side neighborhood. Flannel optional, festivity required.

Manistique Folk Festival

Known by locals simply as Folk Fest, this annual event transforms downtown Manistique into a carnival of music, art, and commerce. With a full live music lineup and over 75 vendors including local makers and artisans, this family-friendly event spans two days and draws attendees from hundreds of miles away.

Benny The Beard Fisher

On the banks of the Manistique River in Germfask rests a larger-than-life fishertroll named Benny, his giant branch beard dangling into the water, in hopes of catching a fish—or perhaps a person paddling by! Crafted completely from reclaimed wood by Danish recycling artist Thomas Dambo, Benny was built with help from local community members, reflecting the region's fishing heritage. This whimsical sculpture has become a popular U.P. attraction. Look for Northwoods Outfitter on M-77 in Germfask, and get ready for an unforgettable photo op.



Cindy King and Kathy Jerde at Bostique
Downtown Manistique, MI

The Matriarchs of Downtown Manistique

Two women, two unique shops, and a decades-long mission to bring heart-and hustle-back to downtown Manistique.

It wasn't the most promising beginning. In 1989, when partners Cindy King and Kathy Jerde opened their first retail venture The Mustard Seed in downtown Manistique, the business district was in noticeable decline.

"There was no vibe," Kathy recalls about the approximately two-block expanse of Cedar Street that makes up the downtown business district. "It was kind of bleak... You'd walk into a store, and it would even smell old."

But the two women, who had met working in church education, had a larger vision for their community. With just \$22,000, they had purchased a "ramshackle little building" and turned it into The Mustard Seed, a Christian bookstore named after the biblical

parable about faith. The name was apropos, because "we had no money, but we had a lot of faith," says Cindy.

For ten years, The Mustard Seed served as both retail space and community anchor, offering hospitality and inspiration in a time when storefronts were shuttering en masse, casualties at first of malls and big-box stores and later, the Internet.

At one point, there wasn't a single downtown café. "Can you imagine?" Kathy says. "There was no place downtown for people to eat."

Cindy and Kathy eventually outgrew their original building and bought a second one—the former JCPenney space—transforming it into a much larger

Mustard Seed. That building, too, needed a full overhaul. "It was a disaster when we bought it," Cindy says. "But we renovated it top to bottom and stayed there for 19 years."

They could've stopped there, but the pair had something else in mind. They had always dreamed of creating a modern, more industrial retail space with SoHo vibes. When the former Hallmark store came up as a possibility, the pair jumped. "We like fixing up buildings," Kathy says, which was good, because the new space needed a lot of help—they had to renovate the entire space.

That building became Bostique, their current store and third major downtown renovation project. Since opening eight years ago, Bostique has helped anchor what has become a true downtown renaissance.

"We always knew it would happen," Cindy says. "Manistique is in a perfect, gorgeous location. I really think it's about to explode."

And others followed. The Mustard Seed was purchased by a new owner, who has kept it a vibrant shopping experience to this day. Wheaty's Pub has also thrived under new ownership; the Boardwalk

Bar & Grill brought new energy to the dinnertime crowd, and Cedar Street Café opened, bringing with it a cozy and delicious breakfast experience. Lake Effect Art Center moved downtown and has since become a cultural hub. Unique shops like Drift Alchemy, Camp and Coastal, and The Mill—a public market housing a variety of businesses like Paper Mill Books, Paul Bunyan Adventure Gear, and Bevy Tea—have opened in the past several years, adding even more vibrancy to the downtown district.

"There was an explosion," Kathy says, explaining that within the last few years downtown has started getting women's groups from Escanaba, Marquette, Gladstone and further away who come to shop, eat, and spend the day, as well as an influx of energy from new businesses and excited locals.

The Bostique story is proof that downtown revitalization takes more than just new businesses—it takes vision, faith, and years of hands-on work, led by visionaries like Cindy and Kathy who can see a future others can't.

Referencing the colorful murals that greet visitors and locals as they make their way from US-2 into downtown Manistique, Cindy says,

"Our vision for the future of Manistique would be just what those murals inspire: to discover, to have imagination, and to have harmony, and then to just grow and blossom."

We set out with the goal to bring hospitality downtown, and we always believed it would come back to life. And we think this is just the beginning. There's no stopping it now."

After more than three and a half decades, Kathy Jerde and Cindy King are ready to take a step back from leading the charge. "We think it's time for the younger folk to take over," jokes Cindy. "We've done our share."

But to visitors, locals, and fellow business owners alike, Cindy and Kathy will long remain the heart and soul of Cedar Street: the matriarchs of downtown Manistique.

The Interior of Bostique
Downtown Manistique, MI



The Original Mustard Seed
Downtown Manistique, MI



A Special Thank You

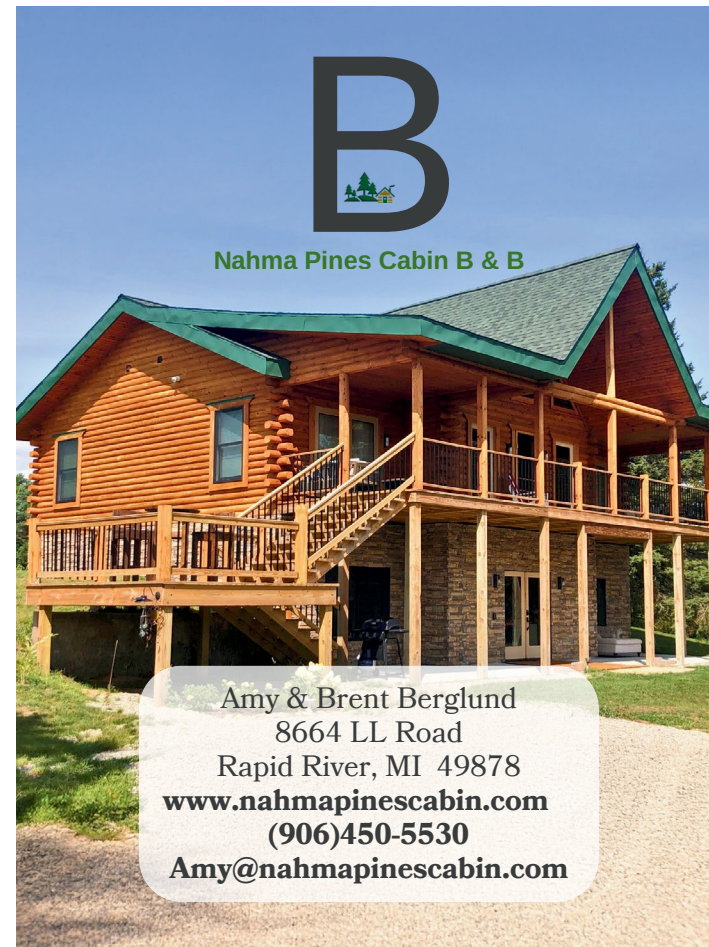
Schoolcraft Tourism & Commerce would like to extend our sincere gratitude to Meagan Francis, local business owner of The Mill—a unique shopping experience in downtown Manistique that features a bookstore and space for other local vendors to showcase and sell their merchandise. Meagan, a published writer, generously volunteered her time and talent to write all of the copy for this magazine, and her thoughtful words beautifully capture the spirit of our community.

A big thank you also goes to Holt Bosse for their exceptional work on the magazine's design and layout, and for creating the Unified Schoolcraft County branding and logo, which went on to win a MarCom Platinum Award.

We also thank Jake Shampine, local photographer, and the Upper Peninsula Travel and Recreation Association for providing the breathtaking photos featured throughout the magazine. Finally, our heartfelt thanks go to Hilary Robinson for her volunteered time and expert guidance throughout the unified branding process, and to all members of the Unified Branding Committee for their dedication in achieving the branding goals outlined in the Schoolcraft County Resiliency Plan. Your combined efforts have created a lasting, cohesive identity that represents the pride and unity of our entire community.

With appreciation,

Schoolcraft Tourism & Commerce



Title and Closing Services in Every County in the Upper Peninsula.

SERVICES
Residential
Commercial
New Construction
1031 Exchange
Remote Online Notary
and more

Scan here to learn more about us!



Now Serving Wisconsin

U.P Branch Locations: Marquette, Manistique, Escanaba, Houghton
906-451-5180 tntup@transmi.com



TREASURE CITY

Largest Gift Shop Up North - Locally owned and operated for 42 years

U.P. Made Food, Candy & Fudge

Jewelry

Souvenirs

Home & Lodge Decor

The largest selection of Tees, Sweats, & Moccasins in the U.P.

(906) 341-2364 Open 7 days a week

4 miles East of Manistique on Highway U.S. 2



Trader BOB'S

Hand Dipped Ice Cream

Gifts

Home Decor

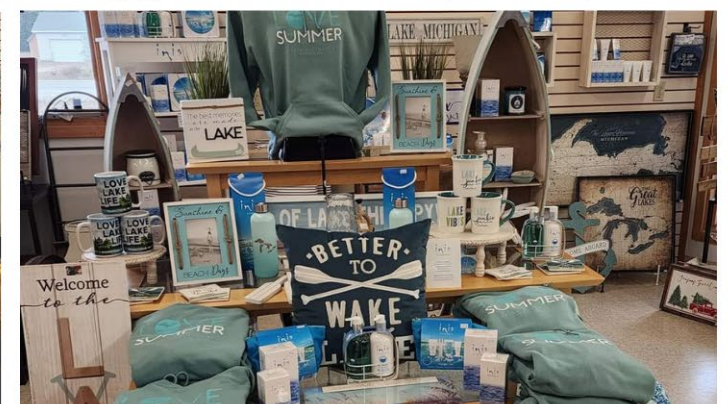
Jewelry

Candy & U.P. Foods

Tees & Sweats

(906) 286-4500 Open 7 days a week

375 Traders Point Drive, Manistique





The Right Place for You & Your Business

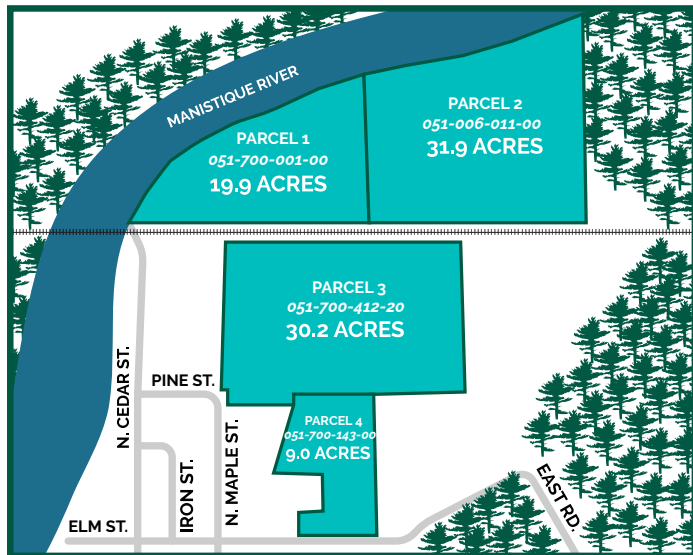


We're Ready to Help.

Scan the QR Code to learn more or visit discoverschoolcraft.com/resources

Long-term growth begins with the right location, and Manistique Industrial Park delivers. From this central U.P. base, your business gains access to:

- **Room to grow.** Schoolcraft County is Michigan's fourth largest county by land area offering ample space and none of the congestion of larger cities.
- **Shovel-ready parcels near Lake Michigan** featuring level and upland terrain, wetlands and forest.
- **Transportation advantages.** US-2, M-94, CR-442 and CR-445; Canadian National freight rail system; and cargo airports within transport range connect you to your regional, national and international customers and vendors.
 - » **Parcel 1:** Existing boat launch and parking lot
 - » **Parcels 2 & 4:** Undeveloped and planning-ready
 - » **Parcel 3:** Partial development with road access and Manistique water, sewer and electric
- **Strategic market reach.** Quick links to St. Ignace, Sault Ste. Marie, Escanaba, Ironwood, Duluth, Marinette, Green Bay, Marquette and beyond.
- **Reliable infrastructure.** Fiber-optic broadband, electricity, natural gas, water, sewer and waste management services.
- **Dedicated workforce.** Proven work ethic, skilled medical professionals, proactive recruiting support from Michigan Works! and a pipeline of regional college graduates ready to contribute to your success.



Manistique Industrial Park

Your Place to Thrive

Welcomed industries include light industrial and assembly, eco-industrial, food and beverage processing, metalworking and fabrication, building materials and products, emerging industries, warehouse and logistics, and training facilities and R&D.

Gifts

APPAREL

CANDY

bostique
bohemian manistique

906-286-4374
bostiquemstq@gmail.com
shopbostique.com

Monday - Saturday
10 am - 5 pm

219 S Cedar St, Manistique



THE BLUE MYSTIQUE INN

Lakeside Luxury Boutique Inn

thebluemystiqueinn.com

(906) 221-5371





Big Boy®

607 East Lakeshore Drive - US-2, Manistique MI 49854

Hours:

7 am - 8 pm

Saturday and Sunday:

Weekly Breakfast and Brunch Buffet

Daily Breakfast, Lunch, and Dinner Features

Daily: All you can eat soup and salad bar

Dine In | Carry Out | Patio Dining | Online Ordering

Summer Hours:

7 am - 9 pm

Daily:

Breakfast and Brunch Buffets

Daily at 4 pm:

Dinner Buffets

906-341-6941

Place an order online via Google or our Facebook page

<https://bigboymanistique.hrpos.heartland.us/menu>



Summer Hours are Memorial Day - Labor Day



PROTECT YOUR MOST VALUABLE ASSETS

LIFE, HEALTH, HOME, AUTO, & BUSINESS

superiorstate.com



Superior State Agency

906-341-6907

202 DEER ST, MANISTIQUE, MI 49854



OUR SERVICES

HOSPITAL SERVICES

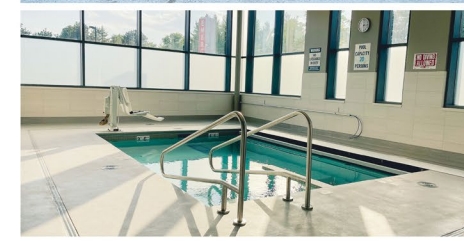
- 24-Hour Emergency Dept.
- 12 Bed Acute Care Unit
- 2 Operating Rooms
- Outpatient Services
- Cardio-Pulmonary Care
- Health Education & Training
- Infusion & Chemotherapy
- Laboratory
- Medical Imaging/Radiology
- Medical/Surgical Nursing
- Social Services
- Swing Bed Services

SPECIALTY CARE SERVICES

- Bariatric Surgery
- Cardiology
- Ear, Nose & Throat (ENT)
- General Surgery
- Nephrology
- Orthopedics
- Pediatrics
- Sleep Medicine
- Surgical Podiatry
- Wound Care Clinic
- Urology

HOMECARE & HOSPICE

- Counseling/Support Groups
- Medical Social Work
- Nursing
- Physical, Speech & Occupational Therapy



RURAL HEALTH CLINIC

- Clinics Located in Manistique & Naubinway
- Commercial Driver's License (CDL) Physical Exam
- Family Medicine
- Psychiatric Care
- RediCare Same Day Clinic
- Telehealth

VISITING SPECIALISTS

- Audiology
- Bariatrics
- Dermatology
- Interventional Radiology
- Neurosurgery
- Obstetrics
- Oncology
- Ophthalmology
- Pediatrics
- Rheumatology
- Vein and Pain Clinics

BEHAVIORAL HEALTH CLINIC

- Group, Individual, Marriage, Family & Substance Use Therapy

REHABILITATION & AQUATIC THERAPY CENTER

- Aquatic Therapy
- Occupational Therapy
- Physical Therapy
- Speech Therapy

906-341-3200
1-800-460-8724

7870W US HWY 2
MANISTIQUE, MI 49854

WEBSITE
SCMH.ORG



Schoolcraft Memorial Hospital is an equal opportunity provider and employer. Schoolcraft Memorial Hospital is a 501(c)(3) Charitable Services Organization.

YOUR NEXT OPPORTUNITY STARTS HERE!
SCMH.ORG/CAREERS





Grover Real Estate

Find your perfect UP North get-a-way or make your next move stress-free! Whether buying or selling, we use top-tier marketing & technology to deliver results. Cabins, land, or homes—we're your trusted real estate team in the Upper Peninsula.

David Muxlow - 906-450-0184

Abbey Wood - 906-450-0222

Travis Wood - 906-450-5080

Corrina Johnson - 906-286-2978

David Bleau - 906-450-3120

Lori Keinath - 906-286-1873

Molly Gregurash - 906-450-1727

Jim Wethy - 906-450-2780

Sara Anderson - 906-280-5544

Delaney Zellar - 906-286-3881

Newberry Office:

Kristine McCraren - 906-630-1834

Joshua Gielecki - 906-235-9896



Caring for you and about you

Putvin Health Mart is a locally owned pharmacy specializing in fast, friendly, and professional service with over 65 years of combined experience!



Medication Services: Vaccines by appointment, Refills, Transfers, and Medical Equipment.



Photo Kiosk, Gifts, Lottery, Liquor, Home decor, greeting cards, toys, and special occasion items, jewelry, fragrances



Over the Counter: Pain, Cold and allergy, vitamins, supplements, and more!

Follow us on Facebook PutvinHealthmartMSTQ

OPEN 7 days a Week | Monday - Friday 9am - 7pm | Saturday 9am - 5pm | Sunday 9am-1pm
211 S Cedar Street, Manistique | 906-341-5494 | putvinhealthmart.com



Comfort Inn and Suites

617 E Lake Shore Dr, Manistique, MI 49854
Book your Stay at Choicehotels.com
(906) 341-6981

Lowest Prices | Best Amenities | Friendly Staff



Quality Inn and Suites

905 E Lake Shore Dr, Manistique, MI 49854
Book your Stay at Choicehotels.com
(906) 341-3777

Lowest Prices | Best Amenities | Friendly Staff



Where Connection Comes Naturally

No noise. No rush. Just the rhythm of trees, water, and time well spent.
In Schoolcraft County, human connection grows in places that let you slow down.

The Heart of the U.P. | discoverschoolcraft.com



Scan the QR Code or visit discoverschoolcraft.com